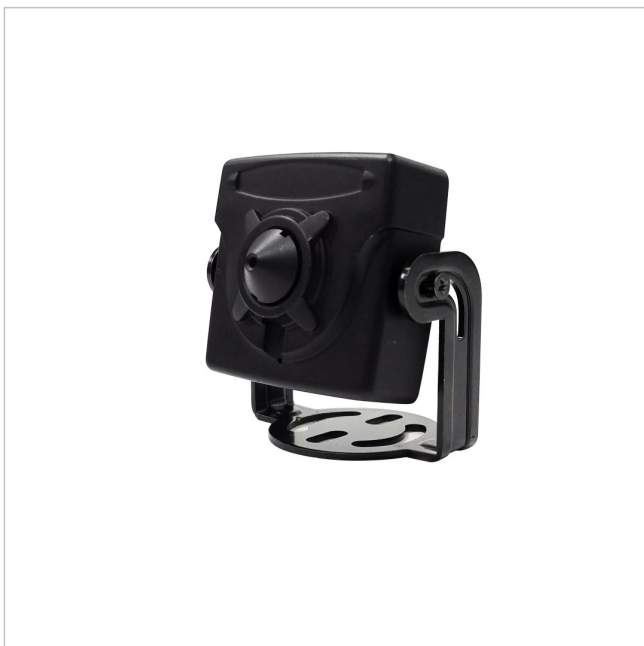




MSM-42F0037MPA

SKU: 217646



1/2.8" HD Board Camera, Colour, 1920x1080, 3.7mm, Pinhole, WDR, Housing, 12VDC

Main Features

- 1/2,8" 2 Megapixel SONY STARVIS 2 CMOS-Sensor
- Super low light performance by STARVIS2 sensor
- Board Camera with rugged metal cabinet
- Resolution max. 1920x1080 (Full HD)
- Separate outputs for digital and multi-signal
- Multisignal: HD-TVI, AHD, CVI and Composite selectable

- Digital signal: EX-SDI, HD-SDI selectable
- Pinhole lens 3.7mm
- Electronic Day/Night function
- ROI (Region of Interest) WDR mode
- Integrated motion detector, defog, privacy zones

Specifications

| | |
|-----------------------------|------------------------------|
| Dimensions (HxWxD) | 37x37,8x21,5mm |
| Serial interfaces protocols | UTC (HD-Signal Format) |
| Series | eneo COAXIZE |
| Camera Type | Board Camera |
| Resolution Pixels | 1280x720, 1920x1080, 720x576 |
| Resolution Pixels | 1280x720, 1920x1080, 720x576 |
| System | colour |
| Sensor size | 1/2.8" |
| Imager | CMOS |
| Day&Night switch | no |

MSM-42F0037MPA

Continuation of the specifications

| | |
|-------------------------------|--|
| Sensitivity | 0,08 Lux at F1,4, 40 IRE |
| Lens Type | fixed focal length |
| Focal Length | 3,7 mm |
| Iris Control | no |
| Digital Zoom | no |
| Observe (62 px/m) | 21 m |
| Recognize (125 px/m) | 11 m |
| Identify (250 px/m) | 5 m |
| Detect (25px/m) | 59 m |
| Horizontal Angle of View | 82° |
| Vertical Angle of View | 42° |
| MOD (Minimum Object Distance) | 0,5 m |
| Housing | Indoor |
| Color (housing) | black |
| Housing material | Metal |
| Video outputs | AHD, Composite (CVBS), CVI, EX-SDI, HD-SDI, HD-TVI |
| Alarm inputs | nein |
| Alarm outputs | no |
| Serial interfaces | Coaxitron (HD Protocol) |
| Mounting | Ceiling mount, Wall mount |
| Supply voltage | 12VDC |
| Power consumption | 1.8W |
| Operating temperature | -10°C ~ +50°C |
| Low Speed Shutter | yes |
| Backlight Compensation | BLC, HLC |
| Wide Dynamic Range (WDR) | WDR 113dB |
| Motion Detector | yes |
| Signal format | AHD @ 2MP, Composite (FBAS), CVI @ 2MP, EX-SDI (270 Mbps), HD-SDI (1.485 Gbps), HD-TVI @ 2MP |
| Camera type | Modul |
| Frame rate | 25/30fps @ 1920x1080p, 50/60fps @ 1280x720p |
| Weight | 110g |
| Manufacturer order number | 217646 |

Optional Accessory

| SKU | Name | Description |
|--------|----------------|---|
| 225085 | MAM-5DC1004M0A | Distributor, 1x BNC Input HD-TVI, CVI, AHD, CVBS, 4x BNC Output |

MSM-42F0037MPA

Continuation of accessory

| | | |
|--------|----------------|--|
| 220299 | MAM-5MM1001M0A | Converter, HD-CVI, HD-TVI, AHD, Composite to HDMI, VGA, Composite, Indoor |
| 236125 | MAM-5MM2203M0A | Converter, 4K HD-TVI, HD-CVI, AHD, auf HDMI, Indoor 12VDC |
| 218653 | PS12DC-11 | Plug-in Power Supply Unit, 100-240VAC/12VDC (1,0A), regulated, with DC Plug |
| 212984 | TVA-1201TRA | UTP Transmitter+Receiver, UTP, BNC, 250m, Indoor, HD TVI CVI, AHD, CVBS, Active, 12V |
| 212985 | TVA-1201TRP | UTP Transmitter+Receiver, UTP, BNC, 150m, Indoor, HD TVI CVI, AHD, CVBS, Passive |

Optional Services

| SKU | Name | Description |
|--------|---------------------------------|--|
| 229233 | Vorkonfiguration analoge Kamera | Preconfiguration 1x analog camera Function test, FW update |

Your contact person

VIDEOR E. Hartig GmbH
 Carl-Zeiss-Straße 8
 63322 Rödermark
 Germany

