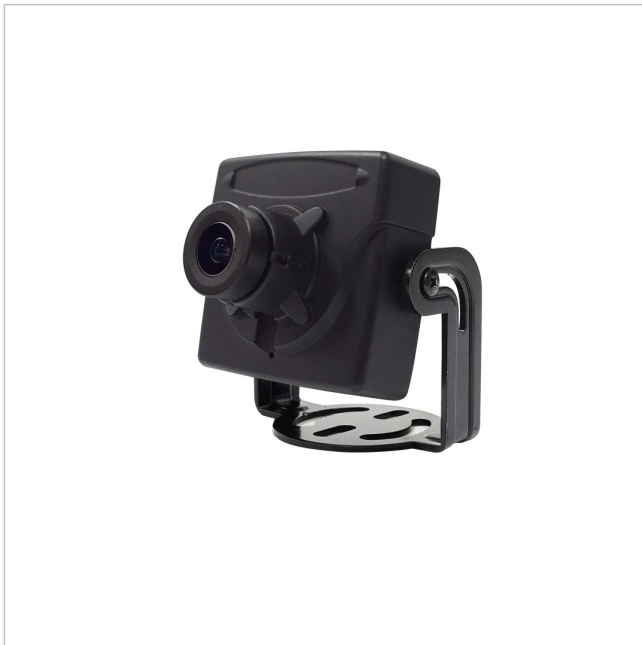




MSM-42F0028M0A

SKU: 217647



1/2.8" HD Board Camera, Colour, 1920x1080, 2,8mm, WDR, Housing, 12VDC

Main Features

- 1/2,8" 2 Megapixel SONY STARVIS CMOS-Sensor
- Board Camera with rugged metal cabinet
- Resolution max. 1920x1080 (Full HD)
- Separate outputs for digital and multi-signal
- Multisignal: HD-TVI, AHD, CVI and Composite selectable

- Digital signal: EX-SDI, HD-SDI selectable
- Fixed 2.8mm
- Electronic Day/Night function
- ROI (Region of Interest) WDR mode
- Integrated motion detector, defog, privacy zones

Specifications

Dimensions (HxWxD)	37x37,8x27mm
Serial interfaces protocols	UTC (HD-Signal Format)
Series	eneo COAXIZE
Camera Type	Board Camera
Resolution Pixels	1280x720, 1920x1080, 720x576
Resolution Pixels	1280x720, 1920x1080, 720x576
System	colour
Sensor size	1/2.8"
Imager	CMOS
Day&Night switch	no
Sensitivity	0,08 Lux at F1,4, 40 IRE
Digital Noise Reduction	yes

MSM-42F0028M0A

Continuation of the specifications

Lens Type	fixed focal length
Focal Length	2,8 mm
Iris Control	no
Digital Zoom	no
Observe (62 px/m)	18 m
Recognize (125 px/m)	8,8 m
Identify (250 px/m)	4,2 m
Detect (25px/m)	45,9 m
Horizontal Angle of View	112°
Vertical Angle of View	59°
MOD (Minimum Object Distance)	0,5 m
Housing	Indoor
Color (housing)	black
Housing material	Metal
Video outputs	AHD, Composite (CVBS), CVI, EX-SDI, HD-SDI, HD-TVI
Alarm inputs	nein
Alarm outputs	no
Serial interfaces	Coaxitron (HD Protocol)
Mounting	Ceiling mount, Wall mount
Supply voltage	12VDC
Power consumption	1.8W
Operating temperature	-10°C ~ +50°C
Low Speed Shutter	yes
Backlight Compensation	BLC, HLC
Wide Dynamic Range (WDR)	WDR 113dB
Motion Detector	yes
Signal format	AHD @ 2MP, Composite (FBAS), CVI @ 2MP, EX-SDI (270 Mbps), HD-SDI (1.485 Gbps), HD-TVI @ 2MP
Camera type	Modul
Frame rate	25/30fps @ 1920x1080p, 50/60fps @ 1280x720p
Weight	110g
Manufacturer order number	217647

Optional Accessory

SKU	Name	Description
225085	MAM-5DC1004M0A	Distributor, 1x BNC Input HD-TVI, CVI, AHD, CVBS, 4x BNC Output
220299	MAM-5MM1001M0A	Converter, HD-CVI, HD-TVI, AHD, Composite to HDMI, VGA, Composite, Indoor

MSM-42F0028M0A

Continuation of accessory

236125	MAM-5MM2203M0A	Converter, 4K HD-TVI, HD-CVI, AHD, auf HDMI, Indoor 12VDC
218653	PS12DC-11	Plug-in Power Supply Unit, 100-240VAC/12VDC (1,0A), regulated, with DC Plug
212984	TVA-1201TRA	UTP Transmitter+Receiver, UTP, BNC, 250m, Indoor, HD TVI CVI, AHD, CVBS, Active, 12V
212985	TVA-1201TRP	UTP Transmitter+Receiver, UTP, BNC, 150m, Indoor, HD TVI CVI, AHD, CVBS, Passive

Optional Services

SKU	Name	Description
229233	Vorkonfiguration analoge Kamera	Preconfiguration 1x analog camera Function test, FW update

Your contact person

VIDEOR E. Hartig GmbH
 Carl-Zeiss-Straße 8
 63322 Rödermark
 Germany

